



ADITYA - DSR
LAKE SIDE



A project of



a condominium community

Lakeside offers the best of the lifestyle with a plethora of facilities created with every family member in mind. Along its breathtaking shoreline, denizens of this residential space enjoy all of the benefits of lake living. Scenic views, natural green life and endless recreational opportunities certainly delight the home owners to dwell into a comfortable, colourful and vibrant lifestyle.



ADITYA & DSR's
LAKE SIDE

a condominium community

A project of

SRI
ADITYA
HOMES
PRIVATE LIMITED

DSR



LAKE SIDE

A fresh vision that recalls the past, yet looks confidently to the future. Naturally beautiful, lavishly landscaped and sensitively integrated with the urban character of Hitech City core.



ADITYA & DSR's
LAKE SIDE

Another exceptional master planned community developed by Aditya and DSR is now coming to Gachibowli. This much anticipated collection of Condominiums feature a soaring residential apartment homes, spacious living. Imagine the ideal combination of natural surroundings and nearby amenities... Welcome to Lakeside Living.

From inspired architecture to unparalleled location, from a wide range of apartments styles to its resort-inspired club, the scaled and scope of lakeside sets a new standards for living.

An odyssey into an opulent lifestyle



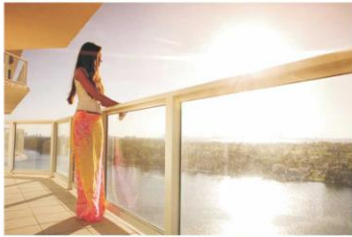
When you are heading towards LAKESIDE, you'll feel the difference and notice some things about yourself. Like the fact that you've been missing the twittering of birds, the canopy of green trees and the glimmer of placid waters. And then, when you see the thoughtfully planned community, with extraordinary views of a lake, the city and the skyline it'll hit you: This is where you belong.

ADITYA & DSR's
LAKESIDE

ADITYA & DSR's
LAKE SIDE

Glimpses of Lakeside

The tranquil waters of the placid lake create a unique ambience where stylish living and natural beauty meet the relaxing amenities. Relax on the terrace, gazing across the lake; let down your hair in the fabulous gardens or in our cozy lounges or light-filled patios.



Luxury that embraces Elegance



At LAKESIDE, the heart of entertainment unfolds with sweeping views of the lake and ends up in the Club House ecstasy. A magical place where the meandering jogging tracks will connect the entry pergola to sloping lawns to dining, shopping, and kids' activities in a fun and active environment.

Club House is the socializing center where the neighbours gather to create lasting memories of family fun and friendship. Use the meeting rooms for recreation, you can throw a party at night and return for a morning by the pool to relax in the sun. The sophisticated fitness facilities, pools, park-based activity centers, an outdoor amphitheater, an extensive public garden is what that distinguishes the club house of Lake Side from others.



Flat No	1	2	3	4	5	6	7	8	9	10	11	12
Area in Sft.	2260	2350	2165	2100	2400	2385	2385	2385	2100	2165	2350	2310

Typical floor plan

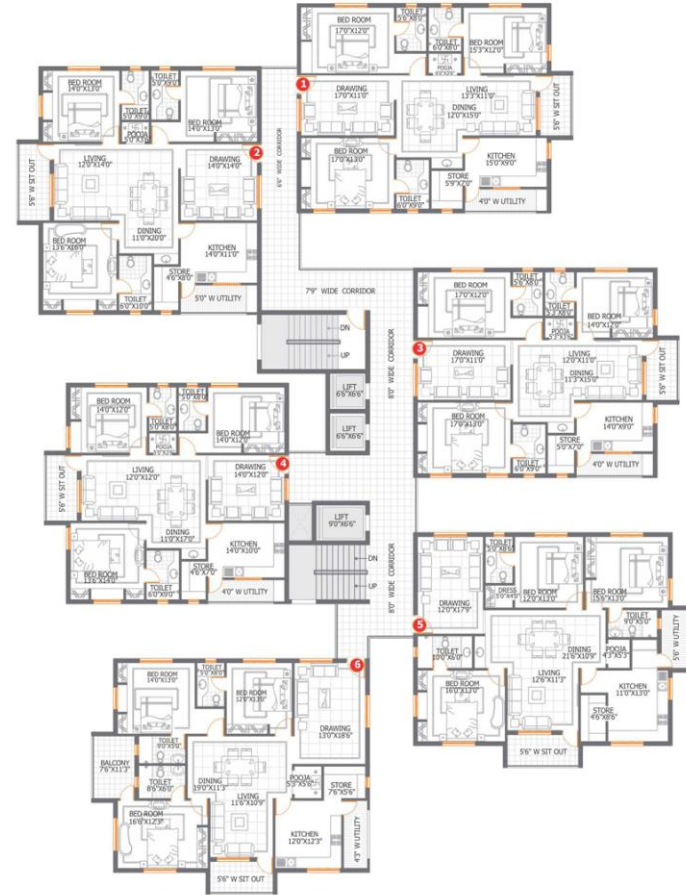
NORTH



Block - A



A-BLOCK



ADITYA & DSR's
LAKE SIDE

Flat No	1	2	3	4	5	6
Area in Sft.	2200	1870	1800	1800	1870	2200

Typical floor plan

NORTH



Block - B



Lakeside is for those who know that the elegant and the environmentally friendly are quite often the same thing. For your health and the planet's, we bring you Envy. Renowned architects has created a building that proves one need not sacrifice aesthetics for health and ecology. Designed and built to standards, the building of Lakeside will reduce the impact on our environment and have tangible benefits such as energy efficiency, water management and sustainable architecture.

Go Green
Walk gently on the earth

Flat No	1	2	3	4	5
Area in Sft.	2400	1540	1540	2300	2325

Typical floor plan

Block - C



ADITYA & DSR'S
LAKE SIDE

Facilities

Club House

Library
Kitty hall / Party hall
Cafeteria

Swimming Pool
Gymnasium
Games Room

Tot Lot / Children play area

Walking track
Provision for gas conducting system
Solar security system

Video door phone

D.G Backup for Common areas & 6 points in each flat
Two Car parking space per each flat



Comforts . . . that make you feel at home



Specifications

R.C.C. Framed Structure :	To withstand Wind & Seismic loads.
Superstructure :	First Class Brick Masonry in Cement Mortar (1:6) prop.
Plastering :	Two coats of plastering with smooth finishing.
Doors	
Main Door :	B.T Wood frame & Shutter aesthetically designed with melamine polishing and designer hardware of reputed make.
Internal Doors :	M.T Wood frame & both sides Teak Veneer flush doors with reputed make hardware fittings.
French Doors :	M.T Wood Door frame, Shutter styles & rails with float glass paneled shutters and designer hardware of reputed make.
Windows :	Finesta / L.G / Ultra flex with float glass shutters.
Grills :	M.S. Safety Grills aesthetically designed.
Paintings	
External :	Two coats exterior Acrylic Emulsion Paint of Asian Apex / ICI of Weather Shield or equivalent make over one coat of primer.
Internal :	Smooth Luppum Altek finish with Acrylic Emulsion paints water based high quality matt finish over a coat of primer.
Flooring	
Bedrooms, Drawing, Living, Dining & Kitchen	Vitrified tiles of size (2 ft x 2 ft).
Bathrooms	Acid resistant Anti Skid Ceramic Tiles / Granite tile flooring.
Balcony & Sit-outs	Johnson nonskid (rustic collection) tiles.
Tiles Cladding & Dadoing	
Kitchen :	Glazed Ceramic Tiles dado up to 2 ft height above kitchen plat form.
Bathrooms :	Glazed ceramic tiles dado of Johnson/ Kajaria or equivalent up to 7ft height.
Utilities / Wash :	Glazed ceramic tiles dado up to 3ft height.
Kitchen :	1. Granite platform with Stainless steel sink with both municipal & bore water connection & provision for fixing of Aqua-guard. 2. Provision for cabinets, exhaust fan & chimney.

Utilities / Wash :	Provision for washing machine, wet area for washing utensils etc.
Toilets :	All Toilets will consist of 1. Granite Counter Top wash basin only in Master Bedrooms. 2. Cascade with flush tank of Hindustan/ Parry or equivalent make. 3. Hot and cold wall mixer with shower. 4. Provision for geysers in all toilets. 5. All C.P Fitting are chrome plated of Jaquar make.
Electrical :	Concealed copper wiring in conduits for lights, fan, plug and power plug where ever necessary of Finolex / Anchor / Toyoma or equivalent make. a. Power outlets for Air-Conditioners in all bedrooms. b. Power outlets for geysers in all Toilets. c. Power plug for cooking range chimney, refrigerator, micro wave ovens, mixer / grinders in kitchen. d. Plug points for refrigerator, T.V. where ever necessary. e. 3-Phase supply for each unit and individual meter boards. f. Miniature Circuit Breakers (MCB) & ELCB for each distribution boards of MDS / Merlingerin make. g. All electrical fittings of Anchor Roma or equivalent make.
Telecommunication :	Telephone point in all bed rooms, living & dining areas. Four pair cables to all the units. Intercom facility to all the units connecting security.
Cable T.V. :	Provision for cable connection in all Bedrooms & Living room.
Inter Net :	Provision for cable connection in one Bedroom.
Lifts :	8 Passengers lift with entrance of Granite/ Marble cladding.
Generator :	Acoustic enclosed D.G. Set, back-up for common areas and six points in each flat

ADITYA & DSR's
LAKESIDE



Location Plan
(NOT TO SCALE)



Signature Lakeview apartments with undeniable presence, LAKESIDE grace the most coveted corner of Hyderabad - Gachibowli.

Encompassing 3.50 sprawling acres and close connectivity to all the attractions across the city, it has built an enviable reputation in Hyderabad. Nestled close to NH-9, it creates a dialogue with all its surroundings. Enhance the time which you spend with your family, as reaching the software hub and the Hi-tech city is just few minute's drive. Get spoilt by the choice of recreational amenities, chill out in the Botanical Garden and enjoy the charming evenings at Shiparamam. Truly...Life rocks at Lakeside.



ADITYA HOUSE
8-2-332/8/A, ROAD NO. 3, BANJARA HILLS,
HYDERABAD - 500 034, INDIA.
TEL: 040-2355 8671 / 72 / 73 / 74 / 80 FAX: 2355 8677.
e-mail: sriadityahomes@rediffmail.com
website: www.adityahomes.com, www.sriadityahomes.com

TAKING LIVES FORWARD

ARCHITECTS



DSR CONSTRUCTIONS
8-2-596, IVRCL TOWERS, ROAD NO.10, BANJARA HILLS,
HYDERABAD - 500 034, INDIA.
TEL: 040 - 66667684 / 66611313.
e-mail: hyd@dsrinfra.com
website: www.dsrinfra.com

PLOT No. 559, ROAD No. 92, Jubilee Hills, Hyderabad
Tel: 040-23554366 / 77, Fax: 040-23555549, e-mail: genesis@satyam.net.in

