



Call us on 5130 9797 / 93 / 94 and ensure your home at DSR Spring Beauty



A Project of



#170, 2nd floor, 1st Block, 2nd Cross,
Koramangala, Bangalore - 560 034.
Ph: 51309797 / 51309793 Telefax: 51309794
Email: info@dsrconstructions.com
enquiry@dsrconstructions.com
Website: www.dsrconstructions.com



Define your lifestyle



SPRING BEAUTY



Define Your neighbourhood

DSR Spring Beauty.

A home in the restful environs of ITPL Road. A quiet setting for the family to live, laugh, play and grow. In a pollution free environment that re-charges your body and your mind, and gets you ready to take on the challenges of another day.

In spite of its natural settings, DSR Spring Beauty is also relatively close to the city. Located near the ITPL, you are only about 12 kms from MG Road and around 7 kms from Indiranagar. A 15 minute drive takes you to the Airport.

Education, health and entertainment facilities are within easy reach and newer facilities continue to be established to cater to the needs of the discerning households of the area.



SPRING BEAUTY



Define
Genuine
q u a l i t y

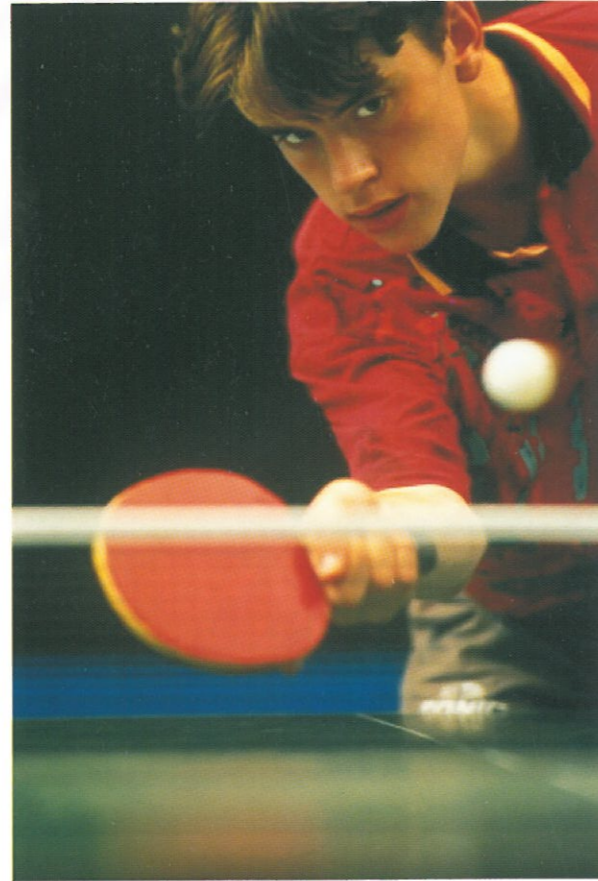
DSR Constructions, the promoters of Spring Beauty, have established a strong reputation for excellence in design, innovative utilisation of space, premium inputs and exceptional workmanship.

The company also has an uninterrupted record of completing projects on time and enjoys the confidence of numerous families occupying homes promoted by DSR.

Every reason why you should depend on DSR Constructions for a home that you will own with joy and enjoy with peace of mind.



SPRING BEAUTY

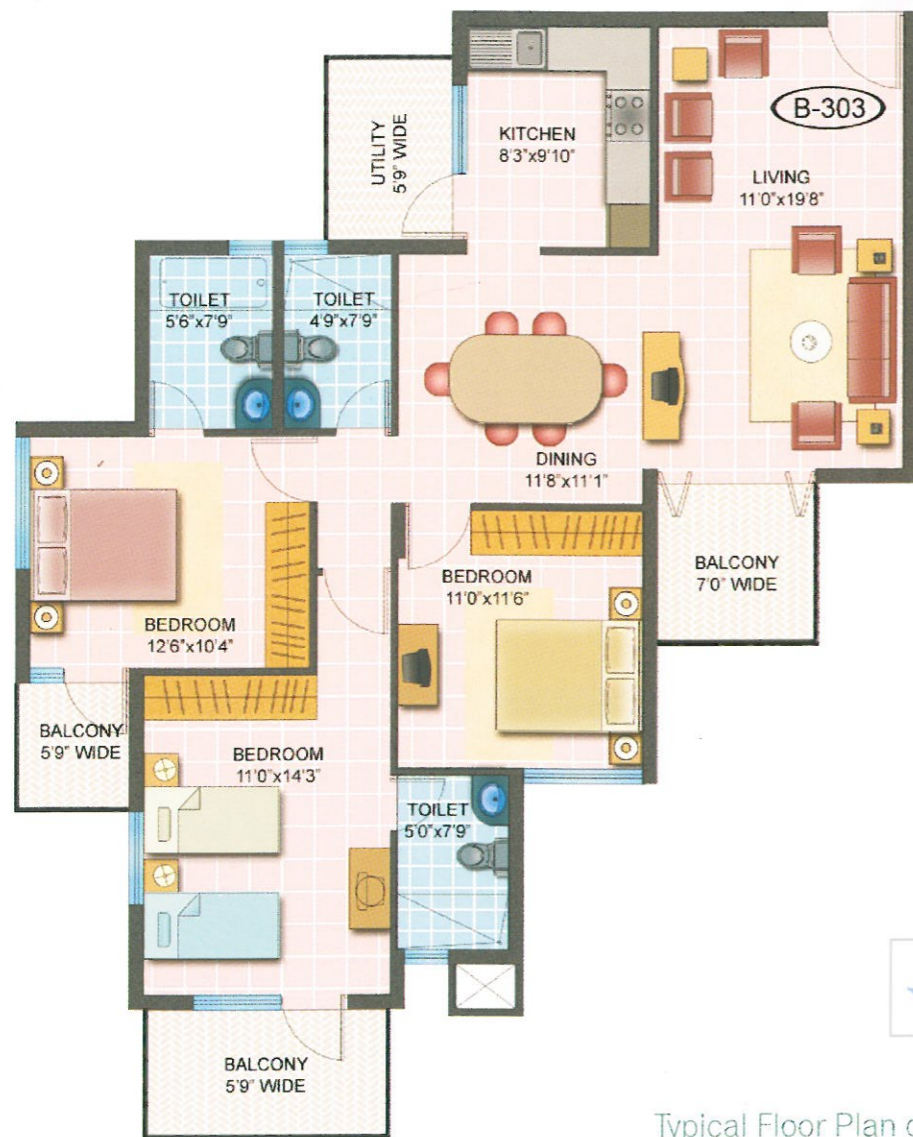


Define Your Leisure

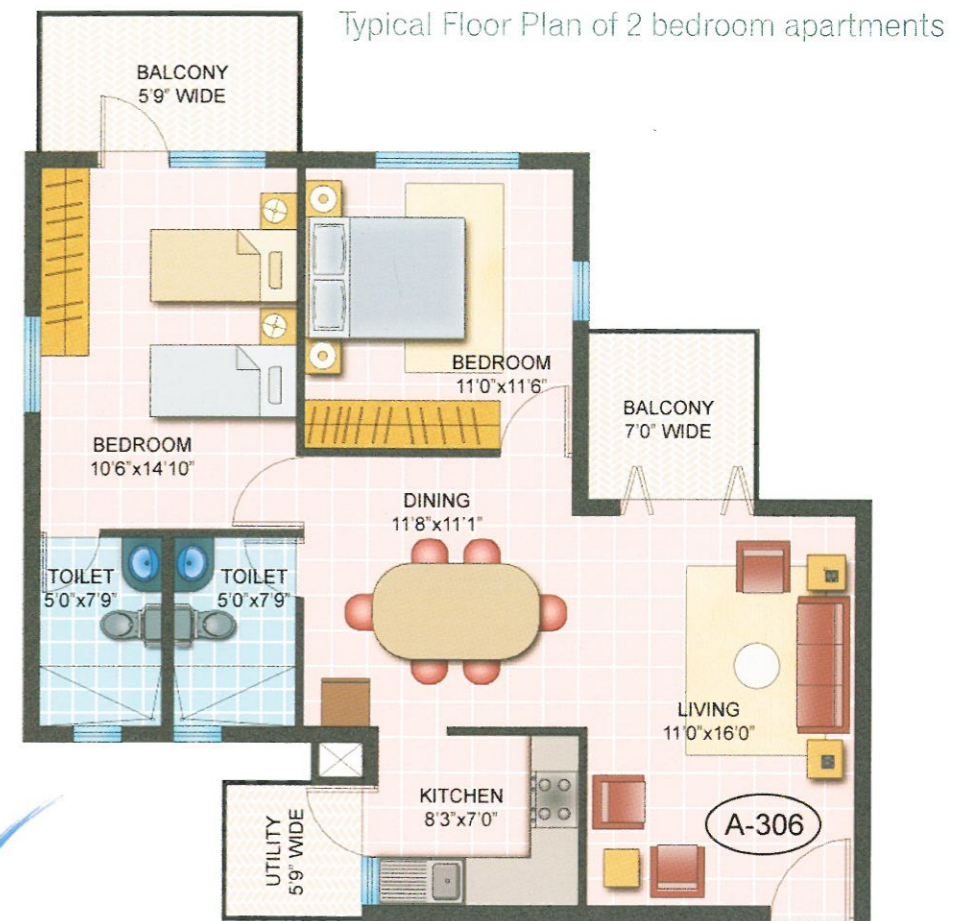
While your family dynamics find a new high in homes that nurture togetherness, DSR Constructions have incorporated premium amenities that will take care of your physical fitness, rejuvenation and leisure.

The well appointed club house is a cozy retreat for you to relax and socialize. A state-of-the-art gym, with a range of equipment, helps you keep in top form. You get your aerobics and flexibility with table-tennis. And when your body is ready for it give yourself up to the warmth of the steam bath.


SPRING BEAUTY



Typical Floor Plan of 3 bedroom apartments



Typical Floor Plan of 2 bedroom apartments

Define
 Your
 c h o i c e s

Spring Beauty is a project of 208 apartments. Make a choice from elegantly created 2 and 3 bedroom homes.

A quality home with premium specifications in a pollution free environment is the dream of every family.

DSR Constructions makes that dream a reality for you at Spring Beauty. Get in touch with us. Take the first step to moving into a fine home.

SPRING BEAUTY

Amenities

- Jogging track around the premises.
- Professional gymnasium with steam bath for the health conscious.
- Multipurpose hall / Club house.
- Departmental store.
- Reading room.
- Indoor games.
- Well-lit, innovatively designed swimming pool with a paved deck.
- Jacuzzi.
- Multi-function intercom security system.
- Pressurised water supply system.
- ATM center (subject to approval),
- Landscaping.
- Cauvery water.
- Car wash area and sanitation facilities for drivers and domestic help.

Specifications

- Structure : RCC framed structure.
- Walls : Cement concrete solid block masonry with cement mortar.
- Plastering : Lime rendering for internal walls and sponge finish for exteriors.
- Doors : Main door frame of teak wood and moulded skin shutter with brass fittings. Honne / Sal wood door frames with water proof flush shutters for internal doors.
- Windows : Aluminium powder coated sliding windows with safety grills.
- Electrical : Concealed 3 phase copper wiring, with points provided for TV, telephone, geyser, A/C etc., with Anchor Roma, or equivalent brand of switches.
- Flooring : 20"X20" vitrified tiles for living & dining and 16"X16" ceramic tiles for remaining areas.
- Kitchen : Granite top platform. 2 ft. high dado in glazed tiles. Stainless steel sink.
- Toilets : 12"X12" anti skid floor tiles and glazed tiles upto door level; Marc, Jaquar or equivalent CP fittings.
- Paints : Smooth finish with Altek and Acrylic distemper paint over Altek for internal walls. Sandtex matt paint for exteriors with enamel paint for doors. Melamine polish for main door.
- Lift : 10 passenger branded lifts.
- Power backup : Generator backup for lights and fans in flats i.e up to 500 Watts for 2 bed & 750 Watts for 3 bed. 100 percent for common areas.

Site Plan



Location Map

