

SUNSHINE

believe your eyes







believe your happiness



TOILET FITTINGS & ACCESSORIES

- Ceramic glazed tiles dado upto door level
- Matching pastel colored sanitary ware in all toilets of Parryware / Hindware or equivalent Make. Marc / Jaquar or equivalent CP fittings
- Provision for geyser, exhaust fan in toilets

ELECTRICAL

- Fire-resistant electrical wires of Anchor / Finolex or Equivalent make
- Elegant, modular switches of Roma Make or similar
- One earth leakage circuit breaker (ELCB) in each flat for safety
- One miniature circuit breaker (MCB) for each room provided at the main distribution box in each flat
- One TV point in living and all bedrooms, telephone points in living and all bedrooms
- AC points in all bedrooms, geyser points in all bathrooms provided.
- Each flat will be provided with three-phase meter

LIFT

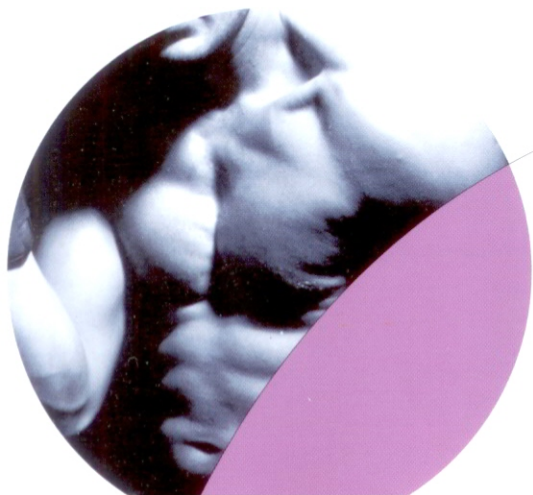
- 6 passenger branded automatic lift (2Nos. per block)

POWER BACKUP

- Stand by generator for lights in common area, lifts and pumps
- 750 Watts Power back-up for 3 bedroom, 500 Watts for 2 bedroom with automatic changeover switches (ACCB Switch)

COMMON AMENITIES

- Children's Play area and landscaping
- Multi purpose hall / club house
- Well equipped gymnasium
- Servant's toilets
- Intercom connection between security and all the flats
- All flats are covered with warranty for a period of 12 months (Conditions Apply)



believe your

though



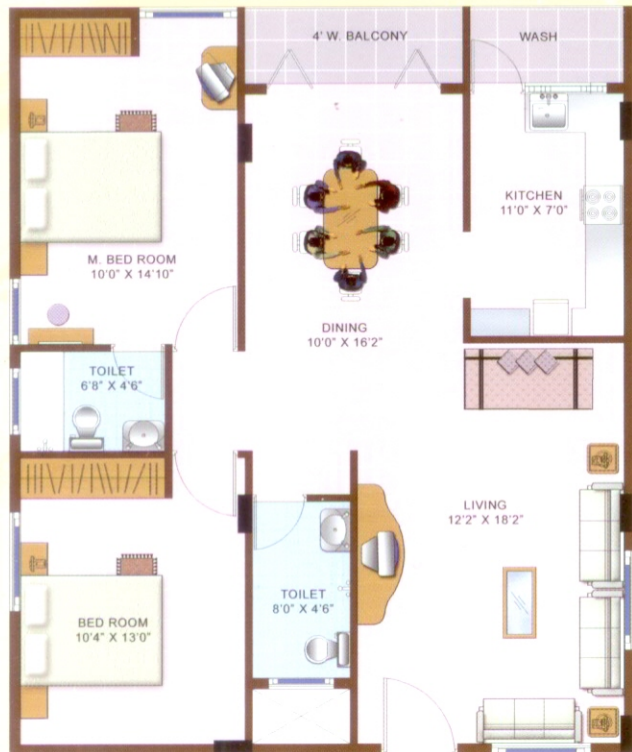
believe your **location**



SUNSHINE

is a project of 88 apartments.

Make a choice from elegantly created
2 and 3 bedroom homes



Typical floor plan of Two Bedroom apartment



Typical floor plan of Three Bedroom apartment



past
ventures



DSR SPRING BEAUTY



DSR DAFFODIL



DSR DIVINE



DSR ORCHIDS



DSR WINDSOR



DSR COSMOS

Project of SHUBHAM Developers, A group of

